

State of Wyoming Corner Record

(In compliance with the **CORNER PERPETUATION AND FILING ACT**, Wyoming Statutes, 1997 Section 33-29-140 et. seq., and the Rules and Regulations of the Board of Professional Engineers and Professional Land Surveyors)

Reverse side of this form may be used if more space is needed.

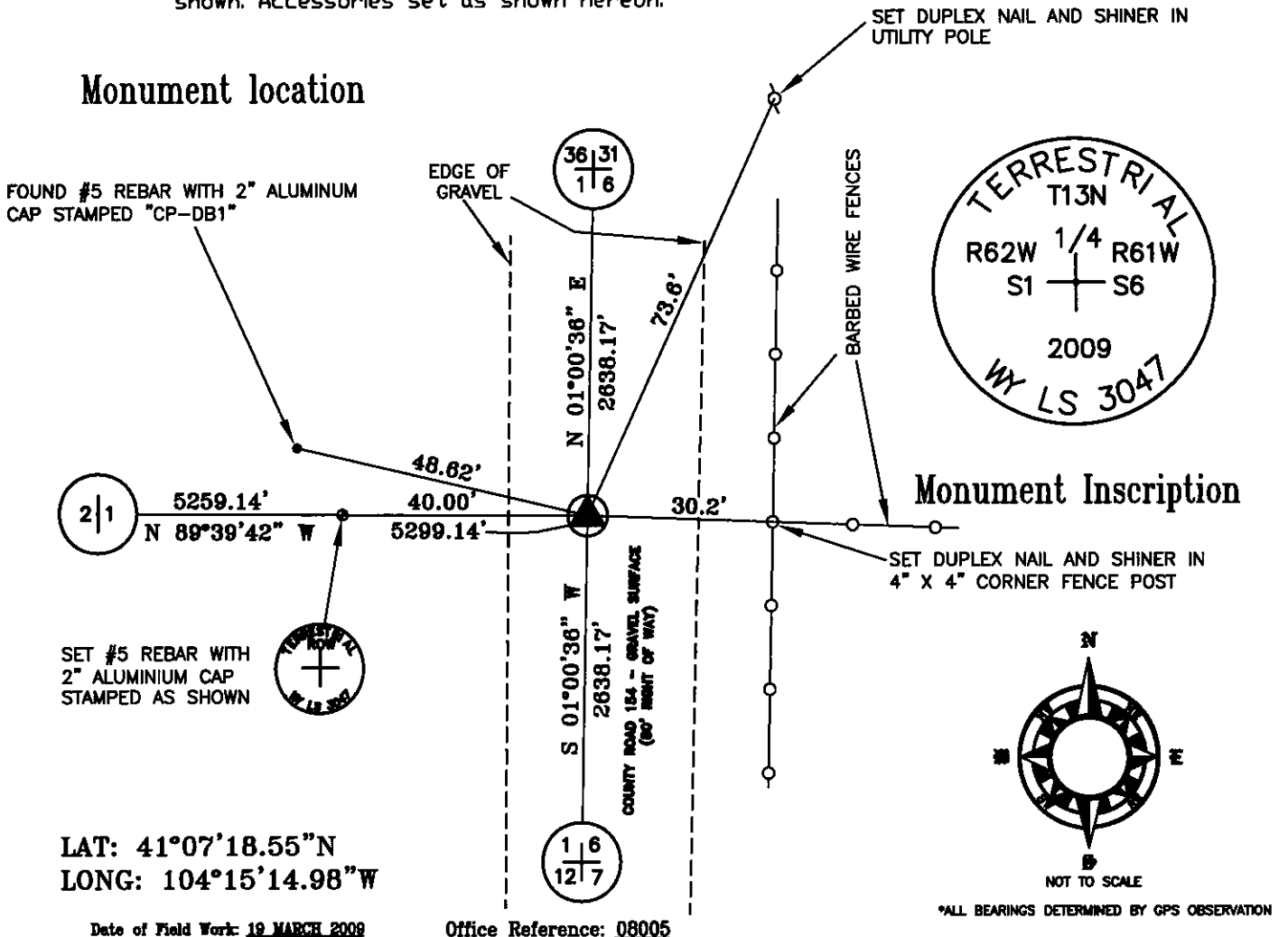
Record of original survey and citation of source of historical information (if corner is lost or obliterated). Description of corner monumentation evidence found and/or monument and accessories established to perpetuate the location of this corner. Sketch of relative location of monument, accessories, and reference points with course and distance to adjacent corner(s) (if determined in this survey). Method and rationale for reestablishment of lost or obliterated corner.

DESCRIPTION OF CORNER EVIDENCE FOUND, AND ORIGINAL RECORD

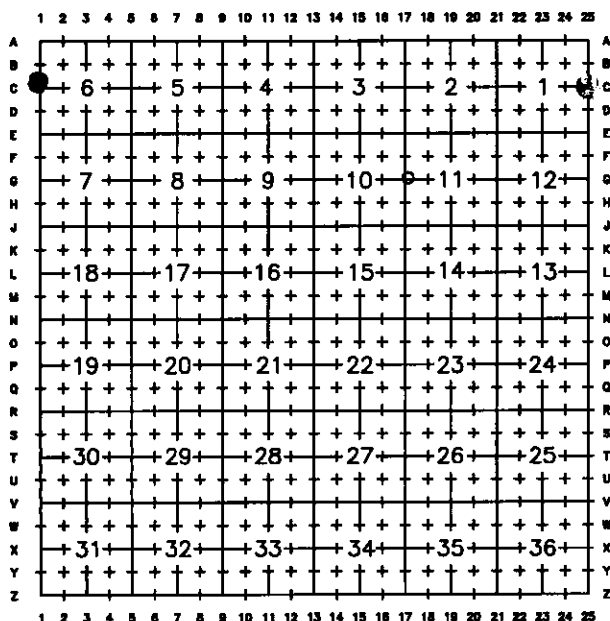
ORIGINAL GLO NOTES: Set white sandstone 14X8X4 per notes of 'Survey of the exterior boundaries of Townships 13, 14, 15 and 16 North of Range 62 West of the 6th P.M. in the Territory of Wyoming' by Alfred M. Rogers, Deputy Surveyor, under his contract No. 15 having dates May 20th, 21st, 1871.
RECOVERED: Bent #5 rebar w/ no cap. Accepted location of base. Removed and replaced at existing location as stated below.

DESCRIPTION OF MONUMENT AND ACCESSORIES ESTABLISHED TO PERPETUATE THE ORIGINAL LOCATION OF THIS CORNER

SET: 30" #6 rebar with 2 1/2" aluminium cap 6' below road surface, stamped as shown. Accessories set as shown hereon.



Cross Index Plat



Corner Name **N 1/4 Section 6, T 13 N, R 62 W, 6th P.M.**

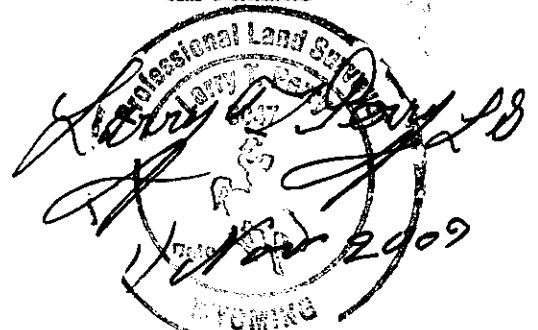
County: **Laramie Wyoming**

SBRPEPLS/PLSW: March 1994; PLSW January 1998

Firm/Agency Address
Terrestrial Surveying & Mapping Co.
"Your Friendly Neighborhood Surveyor"
1127 Terry Ranch Road
Cheyenne, Wyoming 82007
Telephone Number: (307) 834-9360

This Corner Record was prepared by me or under my direction and supervision.

SEAL & SIGNATURE



Cross-Index No.: **1225**